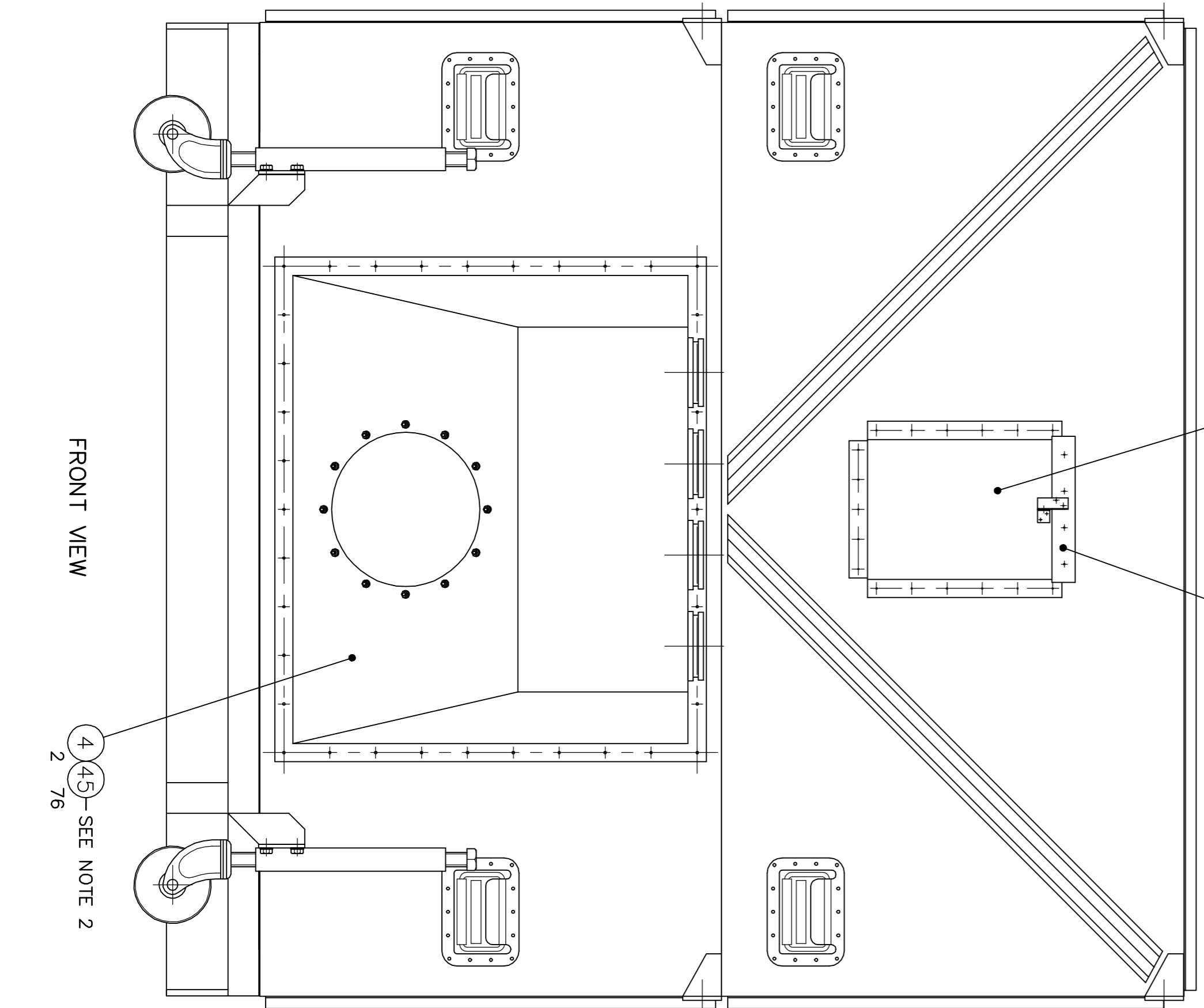
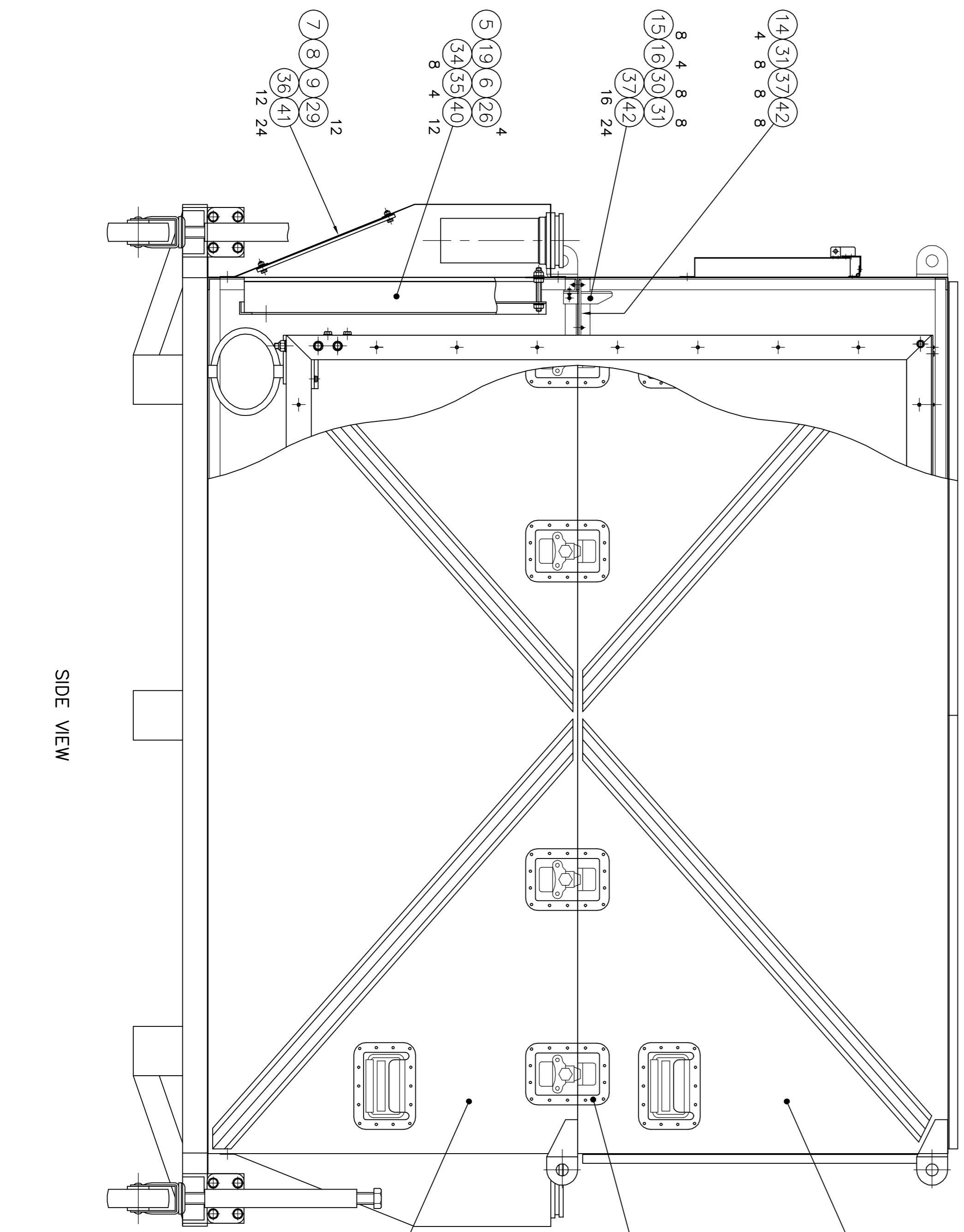


PLAN VIEW

ITEM No.	DRAWING No. OR CAT. No.	TITLE	No. OFF	REMARKS
1	0-ME-0124-401	GENERAL ARRANGEMENT	1	
2	0-ME-0124-411	BOTTOM OUTER COVER	1	
3	0-ME-0124-412	TOP OUTER COVER	1	
4	1-ME-0124-414	FILTER HOUSING	2	
5	3-ME-0124-415	FILTER GASKET	2	
6	2-ME-0124-416	FILTER PANEL FRAME	2	
7	3-ME-0124-417	BURST DISK	1	
8	3-ME-0124-418	MESH PLATE	1	
9	2-ME-0124-419	BACK PLATE	1	
10	1-ME-0124-420	DOCUMENT WALLET	1	
11	3-ME-0124-421	BRACKET	1	
12	2-ME-0124-422	LID	1	
13	3-ME-0124-423	LID BRACKET	1	
14	3-ME-0124-424	GUIDE PLATE	4	
15	3-ME-0124-425	BRACKET	8	
16	3-ME-0124-426	GUIDE	4	
17	-	-	-	-
18	-	-	-	-
19	-	FILTER PANEL	1	
20	-	DESICCANT PORT	8	
21	-	CATCH	16	
22	-	PADLOCK	1	
23	-	HINGE	1	
24	-	-	-	-
25	-	-	-	-
26	-	STUD M10 x 90 LG	4	ST STL
27	-	-	-	-
28	-	-	-	-
29	-	SCREW M6 x 20 LG	12	HEX HD - ST STL
30	-	SCREW M3 x 12 LG	8	HEX HD - ST STL
31	-	SCREW M3 x 12 LG	16	CSK HD - ST STL
32	-	-	-	-
33	-	-	-	-
34	-	NUT M10	8	PLAIN HEX - ST STL
35	-	NUT M10	4	STIF HEX - ST STL
36	-	NUT M6	12	PLAIN HEX - ST STL
37	-	NUT M3	24	PLAIN HEX - ST STL
38	-	-	-	-
39	-	-	-	-
40	-	WASHER M10	12	PLAIN - ST STL
41	-	WASHER M6	24	PLAIN - ST STL
42	-	WASHER M3	32	PLAIN - ST STL
43	-	-	-	-
44	-	-	-	-
45	-	SEALED RIVET 74 x 8 LG	A/R	
46	-	-	-	-
47	-	-	-	-



FRONT VIEW



SIDE VIEW

SEE NOTE 2

SEE NOTE 2

NOTES:-

1. CATCHES, ITEM 21, TO BE RIVETTED AS REQUIRED TO OUTSIDE OF COVERS IN POSITIONS SHOWN.
2. SPOT THROUGH \varnothing 2 PILOT HOLES TO \varnothing 4.1 IN ALL POSITIONS. FIT SEALED RIVETS, ITEM 45, AS PER MANUFACTURERS RECOMMENDATIONS.

