

REFERENCE NOTE:

This drawing is to be read in conjunction with drawings and supporting documentation produced by the following consultants:-

- WHITE ROYAL DIXON LTD.
- BARRELL TREE CONSULTANCY LTD.
- ECOLOGICAL SURVEY AND ASSESSMENT LTD.
- TGD LANDSCAPE LTD.

IMPORTANT NOTE:

Accurate setting out of buildings on (an in relation to) site is critical. For setting out details refer to Consultant Engineers drawings.

IMPORTANT NOTE:

Concrete foundations shown are for illustrative purposes only. Foundation depths and widths to Consultant Engineer and inspecting authority approval.

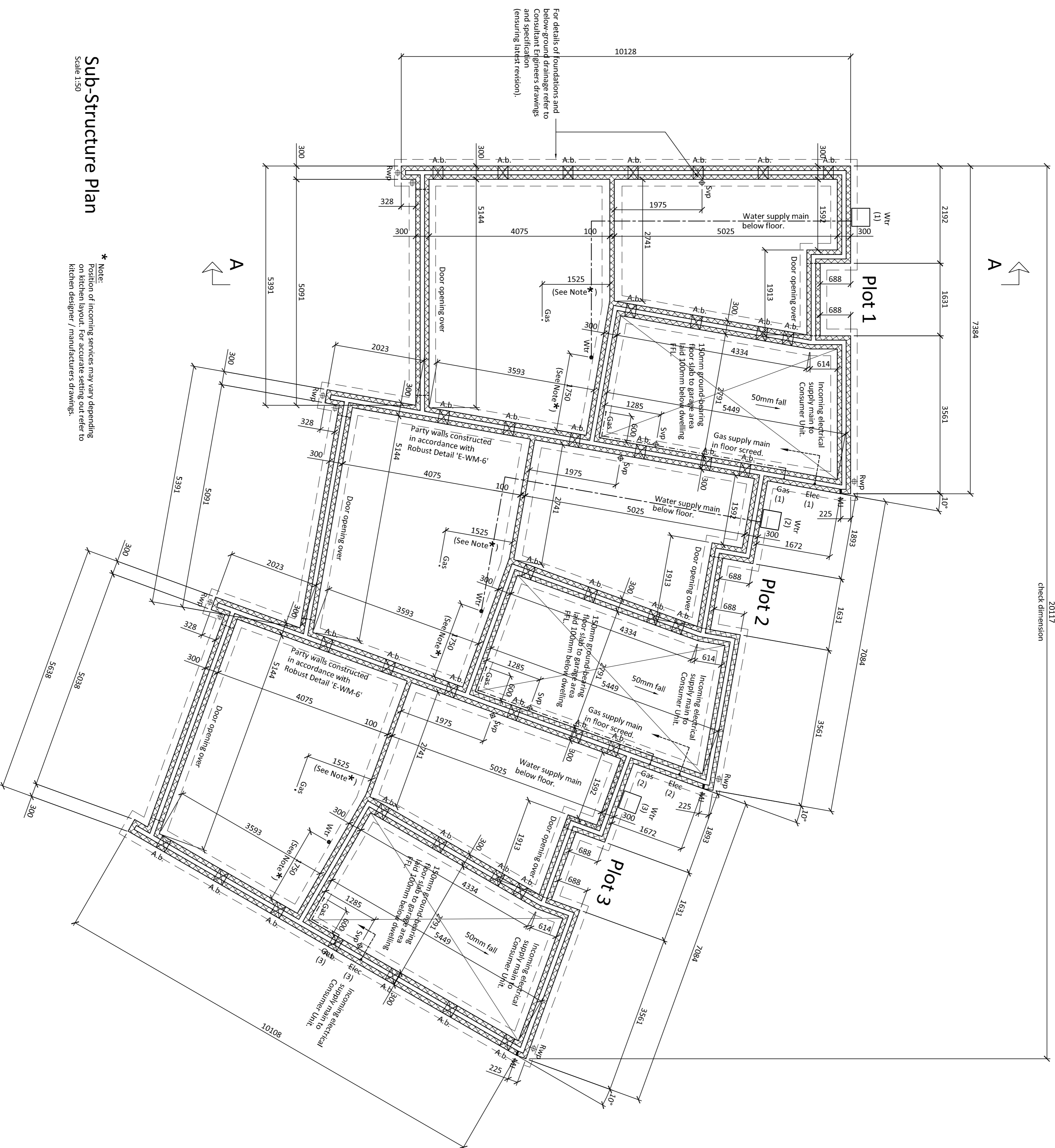
NOTE:

Construction work to follow the instructions and guidance of the 'Accredited Construction Details for Part L' - June 2007 1st Edition for the purpose of achieving insulation continuity and air tightness.

KEY TO SERVICES:

- Mechanical extract fan.
- Grade D smoke alarm (mains powered)
- Light fitting to be dedicated energy efficient type only accepting bulbs with a maximum wattage greater than 40 lumens per circuit watt.
- Double switched socket outlet (1200mm above FFL)
- BT socket (1200mm above FFL)
- Soil and vent pipe.
- Air admittance valve (Durgoo)
- Back inlet gully.
- Rainwater downpipe.
- Water riser / stop cock.
- Gas riser / stop cock.
- Electricity meter in recessed wall box.
- Gas meter in recessed wall box.
- Water meter in concealed ground box.
- Gas fired boiler with balanced flue.
- Mechanical ventilation heat recovery unit.

201117 check dimension



Sub-Structure Plan
Scale 1:50

* Note:
Position of incoming services may vary depending on kitchen layout. For accurate setting out refer to kitchen designer / manufacturer's drawings.

GENERAL NOTES:

- For details and specifications of all elements illustrated on this drawing refer to Project Construction Notes ensuring latest revision at all times.
- This drawing is to be read in conjunction with all relevant Consultant Engineer and sub-contractor drawings, schedules and specifications ensuring latest revision at all times.
- All dimensions shown are to structural elements (not to finishes) unless stated otherwise. For clear internal dimensions subtract finishes from overall dimension. Refer to Project Construction Notes for finishes to steel wall condition.
- All dimensions to be checked on site prior to commencing any work. Any discrepancies should be reported to the Project Architect immediately.
- If in doubt ask.

KEY TO WALLS:

- 102mm facing brickwork (to Local Planning Authority approval)
- 100mm aircrete insulating blockwork (block strengths as specified by Consultant Engineer)
- 140mm aircrete insulating blockwork (block strengths as specified by Consultant Engineer)
- 70mm metal 'C' studwork partition.
- Movement joint positions from Doc level upwards). Refer also to Consultant Engineers details.
- M1
- Sub-ground floor ventilation air brick positions complete with telescopic ventilation ducts (positioned at max. 1.5m centres).

Building Regulations

Rev.	Description	Date	By	Ch
A	PRELIMINARY ISSUE	20.07.10	WAH	MC
B	FINAL ARCHITECT, GABLE WALL REVISED	30.08.10	WAH	MC
C	REVISED IN RESPONSE TO NIMIC LETTER WITH CONDITIONS DATED 27.08.10	06.09.10	WAH	MC



Office 02380 871104
 Fax 02380 871104
 Email admin@abc-designs.co.uk
 Web www.abc-designs.co.uk

Client Stoneham Homes

Project 3No. New Dwellings
 49 Thorold Road
 Southampton
 Hampshire
 SO40 2BF

Sub-Structure Plan

Drawn	Scale	Checked	Date
WAH	1:50 @ A1	MC	July 10
Drawing no.	1009-WD04	Revision	C